

LANE COBURN & ASSOCIATES, LLC - CLIENT/PROJECT PROFILE

SUMMARY OF CLIENTS:

AECOM	CB Richard Ellis	EPI Engineering	SASCO
AHCS	CH2MHILL	JTM Construction	Sequoyah Electric
Archer Western Contractors	City of Bellevue	Lighthouse Electric Group	Sigma-Six Inc.
Allied Electric	Coinstar	LST Consulting Engineers	Silent-Air
AlfaTech	Colocenters	McKinstry	Turner Construction
AMAZON	CPSI	Microsoft	TMOBILE
AVDATA Inc	Dynalectric/Emcore	Northcom	Wave BroadBand
Berger/ABAM	EHS Electric	Prime Electric	W.E. Bowers
Bovis Lend Lease	ELCON	Red Sea Group	West Seattle Montessori
Benaroya Properties	Greenfield LLC	Rock Electric, Inc.	williams + tam
Blue Oak Energy	The Harris Group	Sabey Corporation	VECA Electric
Callison Architects	IDC Architects	Sabey Data Center Properties	
Chatham LLC	Freeman-Fong Architects	Salish Construction	
Coleman Hull & van Vliet	Ellerbe Becket	Meagher & Geer, PLLP	

GOVERNMENT - SELECTED PROJECT PROFILES:

City of Bellevue

LCA is the Engineer of Record for providing a comprehensive analysis of the reliability of the city of Bellevue's Electrical Distribution System. Additionally, LCA is working closely with the City of Bellevue and Puget Sound Energy to ensure that the cities power needs are met.



Port of Seattle – Consolidated Car Rental Facility.

LCA is the Engineer of Record for the 3,000 A Temporary Service for this large project at the Port of Seattle. LCA also provided energy usage analysis and coordination with SCL. Turner Construction is the General Contractor.



LARGE VEHICLE INSPECTION STATION AT NAVAL STATION - Everett Wa.



Lane Coburn and Associates is teaming with **williams + tam DesignWorks** of Seattle for the Design Build Inspection station at the Naval Facility in Everett.



Several projects at Fort Lewis as a sub-consultant to a multidiscipline team headed by BERGER/ABAM.

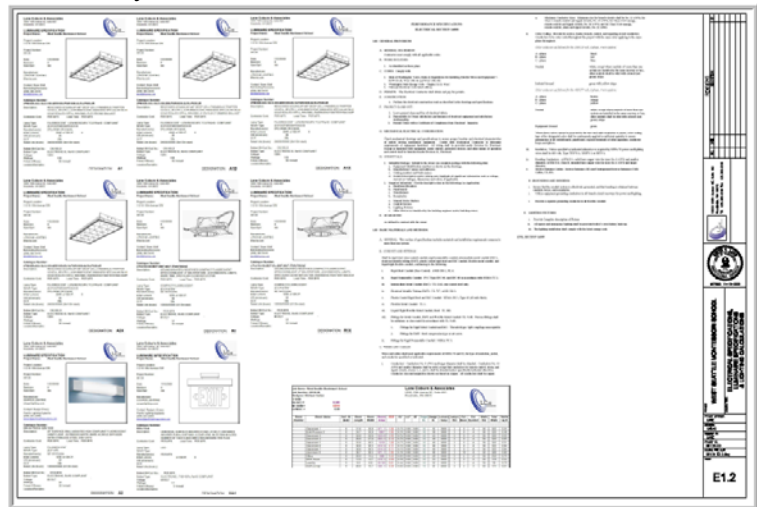
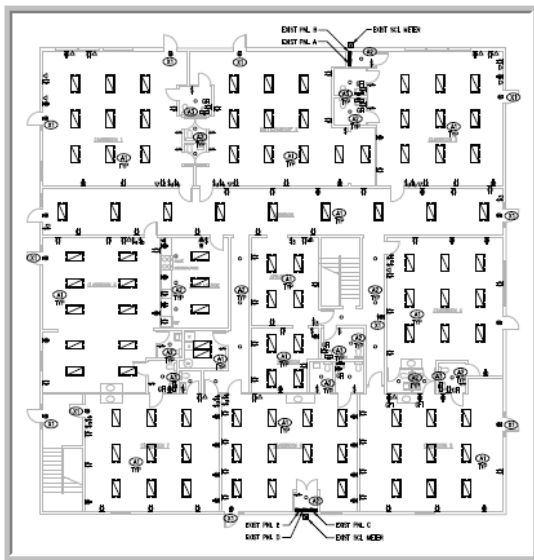
Lane Coburn & Associates, LLC is currently involved in several projects at Fort Lewis as a sub-consultant to a multidiscipline team headed by BERGER/ ABAM.



West Seattle Montessori School

Seattle, WA.

Lane Coburn & Associates, LLC provided electrical engineering services for a Montessori School in West Seattle. Plan review was provided by Labor & Industries



Port of Seattle - 3 year/\$3,000,000 IDIQ – Indefinite Duration, Indefinite Quantity - Low Voltage Electrical Engineering contract.
Seattle, WA

Lane Coburn & Associates, LLC teamed with The Harris Group and was awarded the Port of Seattle - 3 year/\$3,000,000 IDIQ - Indefinite Duration, Indefinite Quantity - Low Voltage Electrical Engineering contract.



Navy - NAVFAC Infrastructure Layout, EHSS Navy Site Prep Project - Everett, WA

Lane Coburn & Associates is working for Allied Electric on this Navy project in Everett, WA. The design includes the electrical design for all of the site preparation for this large project.



Grand Coulee - Medium Voltage Distribution Project

Lane Coburn & Associates is working for Salish Construction on this medium voltage distribution project at the Grand Coulee Dam.



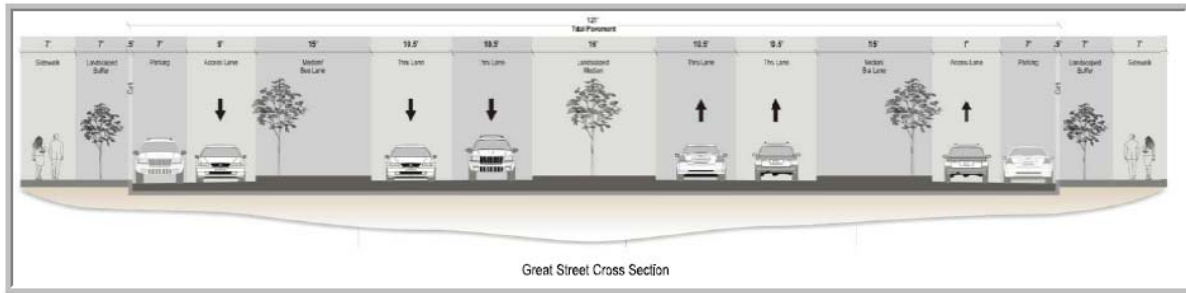
Navy - Cougar Cabins, Arlington, Washington

Lane Coburn & Associates is working for Allied Electric on this large Navy project in Everett, WA. The design includes the electrical design for all of the site preparation.



Pendleton Multiway Boulevard Project – Fort Lewis, WA - Berger/ABAM.

Lane Coburn & Associates, LLC will provide the Value Engineering analysis for this large street widening project at Fort Lewis, Washington.



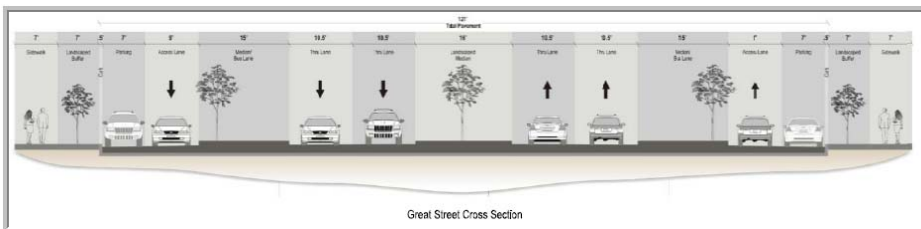
CRCF – Port of Seattle - Comprehensive 2D and 3D Detailing

Lane Coburn & Associates is working with ELCON and providing 2D and 3D detail drawings for construction. This project includes 96 acres of parking, nine stories, 9,000 plus car parking stalls and a full range of concessions.



Pendleton Avenue Street Widening Project – Phase 2– Fort Lewis, WA - Berger/ABAM.

Lane Coburn & Associates, LLC is currently working for BERGER/ABAM providing full electrical and data communications engineering for Phase 2 of the Pendleton Street Widening project.



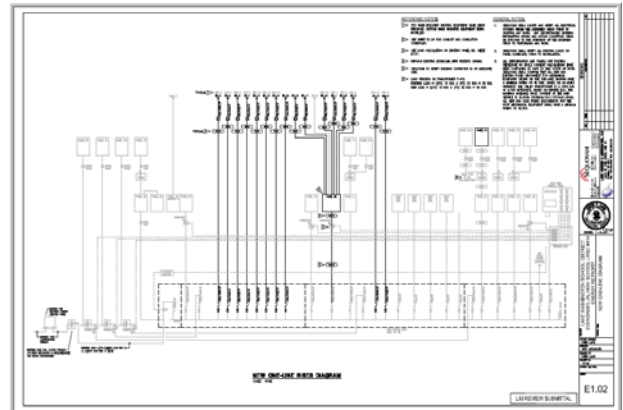
Several Projects at the Port of Seattle – Seattle, WA

As part of the award for a 3 year IDIQ at the Port of Seattle, LCA is working with the Harris Group on several projects at the Port of Seattle. Lane Coburn & Associates is a registered small business with the Small Business Administration with the Federal Government and with the Port of Seattle.



Lake Washington School – HVAC Upgrade Energy Retrofit project

LCA worked for Sequoyah Electric on the electrical infrastructure for an HVAC upgrade for a school in the Lake Washington School district. The project required L&I submittal and approval



14th Avenue Realignment Project – Fort Lewis, WA - Berger/ABAM.

Lane Coburn & Associates, LLC is currently working for BERGER/ABAM providing full electrical and data communications engineering for the 14th Street Realignment project at JBLM

