



LANE COBURN & ASSOCIATES, LLC
Electrical Engineering Solutions for the Construction Industry

NEWSLETTER - FEBRUARY 2009

Lane Coburn & Associates, LLC would like to take this opportunity to thank all of our Great Clients! We continue to improve to provide you a better product.



Our seven staff members include Professional Engineers, Sr. Electrical Designers, CAD designers, Lighting Designers & support staff. With an average of over 25 years of experience each, our team has the expertise to support your project. Two of our team members are LEED Accredited Professionals with a significant amount of experience on LEED projects.

The LCa Team



Keith Lane, P.E., LEED



Scott Coburn



Bill Waldrop



Don Pontsler, P.E.



Nick Alexander, LEED



Michael Cailao, LC



Theresa Lane

MISSION CRITICAL ENVIRONMENTS

Several of our projects have been for **Mission Critical Facilities**. In addition to engineering services, LCA contributes to the engineering community with Articles, Roundtables and Webcasts. Below is a summary of our recent contributions:



Keith Lane is participating as an expert panelist for a **Consulting Specifying Engineering Roundtable** in March on the topic of **Data Center Trends**. Keith is collaborating with a Director from ARUP and a Director from Sun Microsystems.



Keith Lane contributed an article for Pure Power on the topic of **Standby Power for Mission Critical Projects**. The article will appear in the Spring issue of Pure Power.

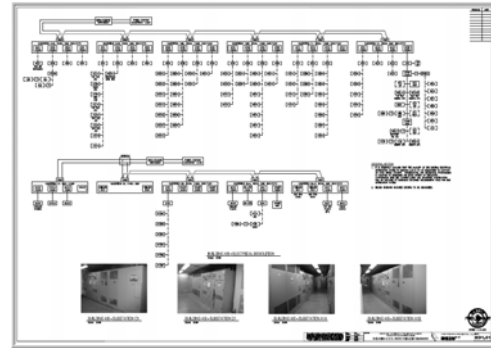


Keith Lane is participating as an expert panelist for **Consulting Specifying Engineering Roundtable** in February on the topic of **VFD's & Harmonics: Symptoms, Solutions & Preventive Measures**.

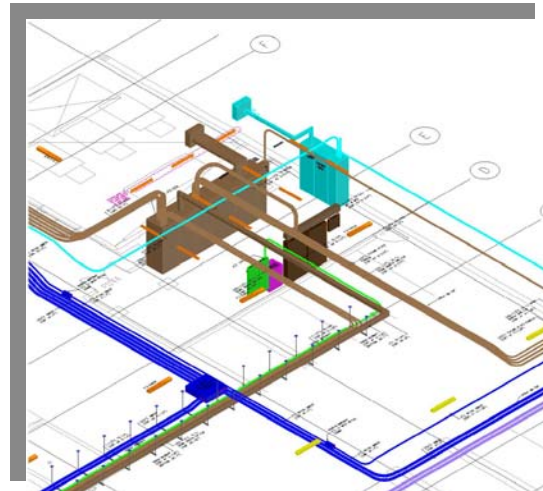
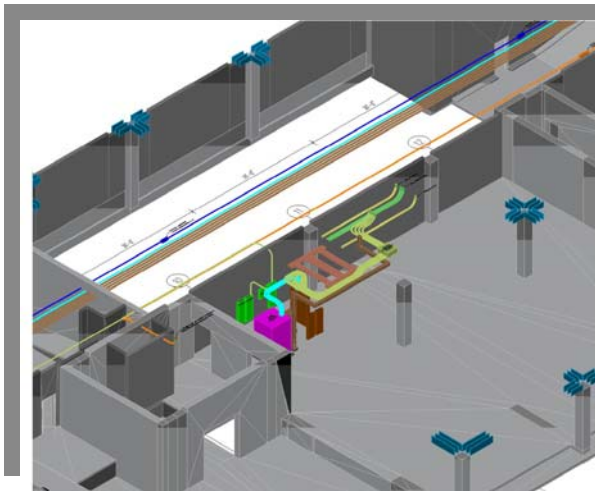
NEW PROJECT

Below is a review of New Projects that LCA has started since our last Newsletter in November '08

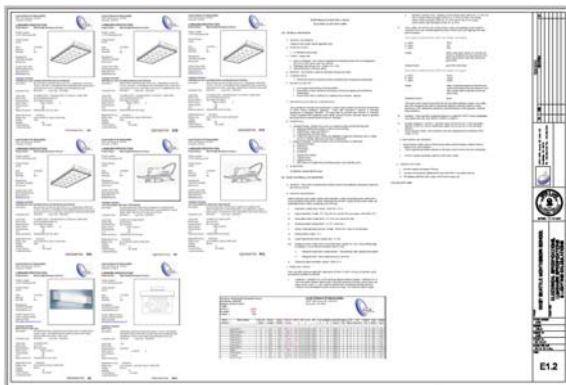
Lane Coburn & Associates, LLC is working with Benaroya Properties on the South Hill Business & Technology Center. LCA is providing a Shell & Core Design Development set of documents and assisting Benaroya in the RFP process for (2) large buildings on campus. Total office space - 350,000 SF.



Lane Coburn & Associates, LLC is in the process of providing comprehensive 3D modeling for Vulcan Block 26 & 32. Two large office buildings in Seattle. We are working for Sequoyah Electric.

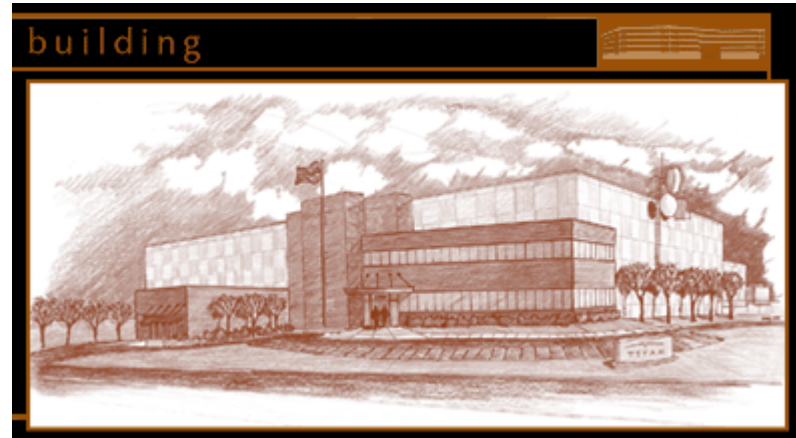


Lane Coburn & Associates, LLC has just completed a project for the West Seattle Montessori School. The project consisted of a complete renovation of the facility.

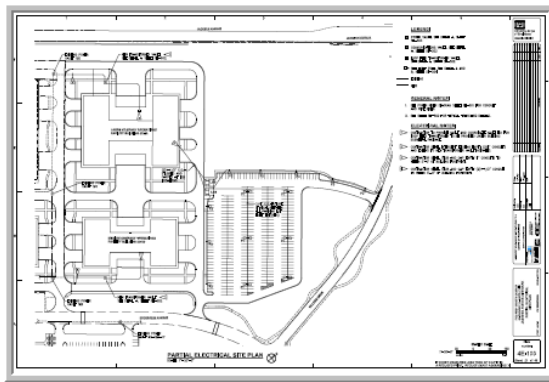


Lane Coburn & Associates, LLC is working on a project for TITAN II – Data Center Feasibility Study – Callison Architects - Ultra Secure Data Center Moses Lake, Wa.

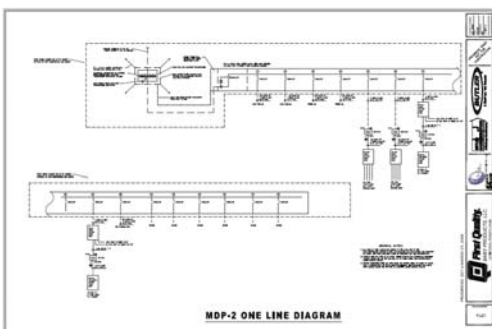
Titan’s strategy is to take a significant step beyond the real estate "shell" market that has proliferated in the recent past. Titan is offering leased space in a 24x7 facility that provides all of the components necessary to operate an efficient, super secure data processing environment. These components include a building designed to withstand nuclear attack that is located outside of the seismically sensitive Puget Sound region in an area having a 500-year flood plain rating. The facility has over 100,000 SF of computer room and human services areas.



LCA is currently involved in several projects at Fort Lewis as a sub-consultant to a team headed by BERGER/ABAM. In December we started (4) Project Definition Reports and in January we picked up another project updating the electrical specifications utilized by Fort Lewis for future projects.



Lane Coburn & Associates, LLC is working on a project for EHS Electrical. LCA is providing the complete electrical design for a BlueScope Construction Manufacturing Facility in Vallejo, California. We recently completed a 1,000,000 SF Manufacturing Facility with EHS and BlueScope Construction in Pennsylvania.





To Better Serve Our Clients

Lane Coburn & Associates has registered with the Small Business Administration and with the Central Contractor Registration for the Federal Government. The following is our registration information:

Certifications: SBE DUNS # 926179537
CCR Registration ORCA Registration
NAICS: 541330 & 541340 CAGE CODE: 555F1



Scott Coburn & Keith Lane were named to the 2009 Seattle Electrical Code Review Committee. Keith & Scott are working with the Seattle Department of Planning and Development and a handful of other engineers and contractors.

THANKS TO OUR GREAT CLIENTS

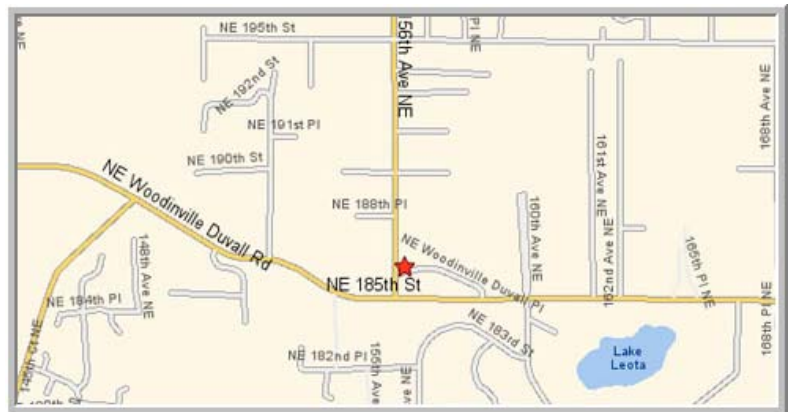
- AHCS
AMAZON
AVDATA Inc
BERGER/ABAM
Bovis Lend Lease
Benaroya Properties
Callison Architects
City of Bellevue
Dynalectric/Emcore
EHS Electric
Greenfield LLC.
IDC Architects
CH2MHILL
Lighthouse Electric Group
Prime Electric
Red Sea Group
Rock Electric, Inc.
SASCO
Sequoyah Electric
Turner Construction
TMOBILE
williams + tam DesignWorks

L.C.a ENGINEERING logo, LANE COBURN & ASSOCIATES, LLC, www.lanecoburn.com 425-368-4848

Lane Coburn & Associates, LLC
Located at 18500 156th Avenue NE, Suite #102
Woodinville, WA 98072



Lane Coburn & Associates, LLC - Office



Map Locating our Office