



LANE COBURN & ASSOCIATES, LLC

## LANE COBURN & ASSOCIATES, LLC

Electrical Engineering Solutions for the Construction Industry

**NEWSLETTER - MARCH 2011**

We would like to take this opportunity to thank all of our Great Clients! We owe our success to you! We have updated our website for easier access to information about our talented people as well as our projects and professional services. Please visit [www.lanecoburn.com](http://www.lanecoburn.com).

Lane Coburn & Associates is continuing to grow! We have hired Gerald Gerhardt, P.E. as a Sr. Electrical Engineer and Lisa Wilcox as a Cad Designer. We now have 11 Seasoned Electrical Engineers & Design Professionals with an average of over 25 years of experience. We are licensed in 13 states and provide electrical engineering and technology consulting nationally and internationally.

### The LCA Team



Keith Lane, P.E., RCDD, LEED



Scott Coburn



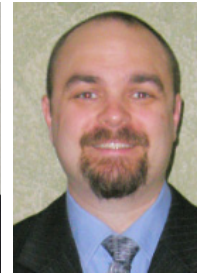
Bill Waldrop, RCDD



Gary Mullin, P.E.



Gerald Gerhardt, P.E.



Nick Alexander, LEED



Jack Slagle



Don Pontsler, P.E.



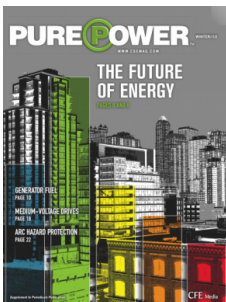
Vicky Williams



Theresa Lane



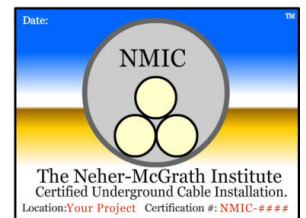
Lisa Wilcox



### MISSION CRITICAL ENVIRONMENTS

LCA Specializes in **Mission Critical Facilities**. In addition to engineering services, LCA contributes to the engineering community with Articles, Roundtables, Presentations and Webcasts.

Keith Lane has published an article in the March 2011 edition of Consulting Specifying Engineering Magazine about the design and specification of standby generators in mission critical facilities.



Keith Lane participated in a Mission Critical Roundtable for Pure Power Magazine. The Roundtable included industry leaders and will be printed in the March edition of Pure Power.

LCA is obtaining our Engineering License in New York to support our mission critical facility project in this area.

LCA owns and operates the Neher-McGrath Institute.  
Please visit [www.neher-mcgrath.org](http://www.neher-mcgrath.org) for more information.

**Neher-McGrath Institute**

ELECTRICAL ENGINEERING

TECHNOLOGY/RCDD

D/B TEAM MEMBER

LIGHTING DESIGN

CONSULTING

LEED A.P

## NEW PROJECT

Below is a review of New Projects that LCA has started since our last Newsletter in December of 2010



### Large Data Center project in New York – Sabey Data Center Properties

Lane Coburn & Associates is working directly for Sabey Data Center Properties (SDCP) on a very large data center build out in New York.

**Sabey Data Center Properties**

### Neher-McGrath Duct Bank Heating Calculation Analysis – Large Data Center – Eastern Washington

Lane Coburn & Associates is working for SASCO on a Neher-McGrath duct bank heating calculation analysis for a large data center project in Eastern Washington.



### Feeder Re Configuration for the Starbucks Building – Seattle, WA

Lane Coburn & Associates, LLC is currently working for Sequoyah on a feeder reconfiguration for Starbucks in Seattle.



### Large Data Center Project Permit Documents – Intergate Quincy Data Center

LCA is working directly for Sabey Data Center Properties (SDCP) and completing the Permit Documents on this very large data center build-out. This data center campus offers superior reliability, scalability, concurrent maintainability, low cost power and a low PUE. The project includes full design and coordination, 2D & 3D detailing and construction administration for a 3 building Data Center Campus, Medium Voltage Substation and MV distribution. See the following video of the project. <http://www.sabey.com/leasing/igq-video.html>

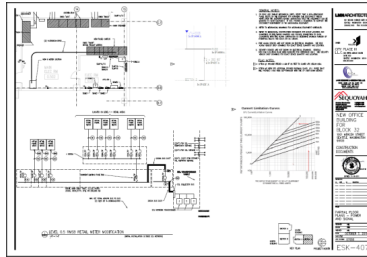


### Container Data Centers – Undisclosed Locations – West Coast Undisclosed Client

Lane Coburn & Associates is working for Silent-Air on the design and deployment several containerized data centers on the West Coast – Undisclosed locations.



**Vulcan Block 32 – Retail Short Circuit Analysis – Sequoyah Electric**



Lane Coburn & Associates is working for Sequoyah Electric on the short circuit analysis of the electrical distribution of the Block 32 Retail reconfiguration.



**Undisclosed Data Center Facility – Undisclosed Location**

Lane Coburn & Associates is working for VECA Electric on a data center modification project for an undisclosed data center facility.



**South Hill Business & Technology Center – PSE Incentives Coordination**



Lane Coburn & Associates is working with JTM Construction and Benaroya, coordinating the PSE Incentives on a large Tenant Improvement project in Building A at the 92 acre South Hill Business & Technology Center in Puyallup, WA.

**Undisclosed Data Center – Very Large Complex Data Center Campus project on the East Coast**

Lane Coburn & Associates is working for SASCO providing peer review, value engineering analysis and the Neher-McGrath duct bank heating calculation analysis for a large data center project on the East Coast.



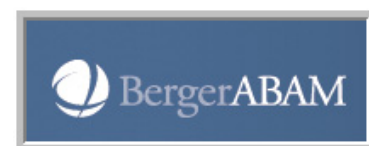
**SDC 42 – Large Data Center – Value Engineering and Peer Review – Tukwila Washington**

Lane Coburn & Associates is working for Sabey Data Center Properties providing Value Engineering and Peer Review services on this large Data Center in Tukwila Washington.



**FY13 – North Fort Physical Fitness Center – Fort Lewis, WA – BergerABAM.**

Lane Coburn & Associates, LLC is currently working for BergerABAM on the North Fort Fitness Center.







## To Better Serve Our Clients

Lane Coburn & Associates has registered with the Small Business Administration and with the Central Contractor Registration for the Federal Government. The following is our registration information:

Certifications: SBE  
ORCA Registration

DUNS # 926179537  
NAICS: 541330 & 541340

CCR Registration  
CAGE CODE: 555F1



We have expanded our professional engineering state licenses to 13. Our state licenses include; **Washington, California, Oregon, Idaho, Arizona, Montana, Nevada, Utah, Hawaii, Virginia, Pennsylvania & Alaska.** We are currently obtaining our state of New York license. We are also a National Certificate Holder of an NCEES record that allows us to obtain other state licenses in an expedited manner.

### THANKS TO OUR GREAT CLIENTS

AHCS  
Allied Electric  
AlfaTech  
AMAZON  
AVDATA Inc  
Berger/ABAM  
Bovis Lend Lease  
Benaroya Properties  
Blue Oak Energy  
Callison Architects  
Chatham LLC  
Coleman Hull & van Vliet  
CB Richard Ellis

CH2MHILL  
City of Bellevue  
Coinstar  
Colocenters  
CPSI  
Dynalectric/Emcore  
EHS Electric  
ELCON  
Greenfield LLC  
The Harris Group  
IDC Architects  
Freeman-Fong Architects  
Ellerbe Becket

JTM Construction  
Lighthouse Electric Group  
LST Consulting Engineers  
McKinstry  
Microsoft  
Northcom  
Prime Electric  
Red Sea Group  
Rock Electric, Inc.  
Sabey Corporation  
Sabey Data Center Properties  
Salish Construction  
Meagher & Geer, PLLP

SASCO  
Sequoyah Electric  
Sigma-Six Inc.  
Silent-Air  
Turner Construction  
TMOBILE  
Wave BroadBand  
W.E. Bowers  
West Seattle Montessori  
williams + tam  
VECA Electric



LANE COBURN & ASSOCIATES, LLC.  
www.lanecoburn.com 425-368-4848

*Lane Coburn & Associates, LLC*  
12900 NE 180<sup>th</sup> St., Suite #201, Bothell, WA 98011

